



OSX B2™ COAT WITH LAZERMAX™

B2™ is our workhorse. Nose down and grind it out. Utilitarian in every aspect and more... You don't have to spec out needed options – they're already there!

This power house is ready for battle with all the great Lakeland features you need to get the job done. The B2™ is available custom built, or keep it simple and order our OSX B2™ right off the shelf as shown.

OSX B2™ Stock Program (as shown)

- 6.9 oz. Gold Pioneer Outer Shell
- Defender® M SL2 Camo Print Thermal Liner
- Stedair 3000® Moisture Barrier
- Includes all standard features shown

Compliant to the current 2018 Edition of NFPA 1971 Standard on Protective Ensembles for Structural Firefighting



Style BP32



Pleated shoulder and back goes from the top of the shoulder to the hem of the coat for maximum mobility

32" length... a popular size in the Fire Industry

OSX B2™ Coat Standard Features



Low profile 3" collar and scooped profile throat tab protect without interfering with any SCBA.



Contour-cut sleeve ergonomically curved so it bends like the human anatomy, giving greater freedom of movement.



Shoulder pleats give maximum mobility. Set-in sleeve distributes the weight of the coat evenly over the shoulders.



An extra layer of thermal liner in the shoulders protects from heat buildup in areas of high compression.



3.25" storm flap provides plenty of thermal protection. Closure secures with FR Velcro®



Cuffs feature black Stedshield reinforcement with a 5" deep sleeve well, great for interfacing with wristlet or gauntlet gloves



7" black Kevlar® wristers with thumb hole



Radio pocket with mic strap lined with moisture barrier. Antenna notches left and right.



Universal flashlight holder fits any flashlight.



Large 2" x 8" x 8" expansion pocket lined with Kevlar® twill for additional tools. Hand-warmer pocket slots behind expansion pocket.

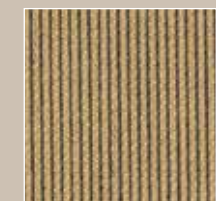


Easy access Velcro® liner inspection port in hem of garment for ease of liner inspection.

Feature List

- 32" Length Coat
- Plastic Delrin® YKK® Zipper/Velcro® Closure
- NYC Style Lime/Yellow 3M™ Scotchlite™ Reflective Material for enhanced visibility - Double Stitched
- Ergonomic Pleated Back/Shoulders
- Easy Grip™ DRD
- Low Profile 3" Collar with Hanger Loop
- Set-In Pleated Ergonomically Curved Sleeves
- 7" Black Kevlar® Thumb hole Wristers
- 5" Deep Black Stedprene Sleeve Wells
- Black Stedshield Coat Cuff Reinforcements – Double Stitched
- 2" x 3.5" x 8" Radio Pocket with Velcro® Antenna Opening on each side of Flap
- Self Mic Strap above Radio Pocket
- Universal Flashlight Holder
- 2" x 8" x 8" Coat Expansion Pockets with Hand-warmer
- Liner Inspection Velcro® Opening
- 3 Snap Tabs at the hem to secure the liner to the outer shell"
- LazerMax™ Trim

OSX B2™ Standard Materials



6.9 oz. Gold Pioneer Outer Shell



Defender® M SL2 Camo Print Thermal Liner



Stedair 3000® Moisture Barrier

OSX B2™ PANTS WITH LAZERMAX™

The challenge? Create a pair of pants designed for maximum protection, comfort and ergonomics while minimizing the weight. The result is B2™. These pants carry over many of the elements of our premier Stealth™ pants, with the addition of a short 3" bib. Round out the feature list with SideKick™ Knee Pads and LazerMax™ trim, and you have pants with no equal!

Compliant to the current 2018 Edition of NFPA 1971 Standard on Protective Ensembles for Structural Firefighting

3M Scotchlite™ Reflective Material



Kevlar. Nomex.

Style BP33



B2™ Turnout – A Complete Protection System!



3" short bib

The 32" B2 coat and bib pants combine to make a perfect protection system. The short 3" bib is all that's needed to ensure complete overlap and protection from the elements.

OSX B2™ Pant Standard Features



Low-rise waist with small 3" rear bib for overlap protection



Multiple belt loops keep belt in place. Handy handle grips make donning pants a breeze.



2" Kevlar® Belt system gives maximum wear and tear.



Two front belt loops open with snaps and Velcro® enable use of Class 1 RIT ladder belt.



2" x 10" x 10" expansion pockets with pull tabs for easy opening. Pockets lined with Kevlar® Twill for durability.



FR Velcro® closure on square cut fly.



Dynamic pleats above the knees moves in and out as your legs bend, giving greater mobility and less fatigue



SideKick™ Knee Pad extends the knee panel to the outside of the leg. SideKick™ reduces abrasion when pushing with the side of the knee



Optional foam knee padding makes sustained crawling more comfortable. Order option PO-FMKP

Black-Ops™ Suspenders Included!



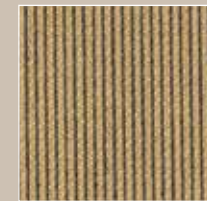
Feature List

- Lo-Rise Waist Design with small 3" Rear Bib for Overlap Protection.
- Pant Closure: 2" Wide Black Kevlar® Belt with belt Loop/Handle Grips, Snap and Velcro® Fly Closure
- 2" x 10" x 10" Pant Expansion Pocket lined with Kevlar® Twill
- Black Stedshield Double Padded Knees with Side Kick Extension Panel
- Black Stedshield Pant Cuff Reinforcements – Double Stitched
- Lime/Yellow 3M™ Scotchlite™ Reflective Material for enhanced visibility – Double Stitched
- Reverse Boot Cut
- Black-Ops™ Multi Adjust Suspenders – No Metal Suspender Buttons!
- LazerMax™ Trim

OSX® B2 Stock Program (as shown)

- 6.9 oz. Gold Pioneer Outer Shell
- Defender® M SL2 Camo Print Thermal Liner
- Stedair 3000® Moisture Barrier
- Includes all standard features shown

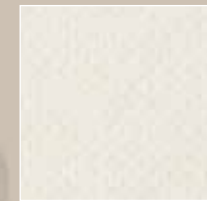
OSX B2™ Standard Materials



6.9 oz. Gold Pioneer Outer Shell



Defender® M SL2 Camo Print Thermal Liner



Stedair 3000® Moisture Barrier

MATERIALS

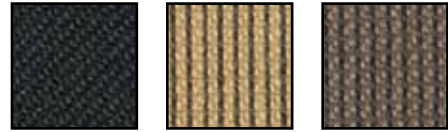
OUTER SHELLS

Nomex® IIIA



Content: 93% Nomex®/5% Kevlar®/2% Anti-static blend spun yarn
Material Weight: 7.5oz/yd²
Plain Weave

Pioneer™



Content: Kevlar®/Nomex® spun yarn with Enforce Technology™
Material Weight: 6.6oz/yd²
Twill Weave

Armor™ AP



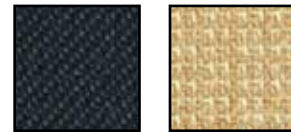
Content:
Gold/Black: 80% Nomex®/Kevlar® spun yarns, 20% 400 denier Kevlar® filament
Khaki: 80% Nomex®/Kevlar®/Teijinconex® spun yarns, 20% 400 denier Kevlar® filament
Weave: Comfort Twill with Filament Twill Technology

Agility



Content: Nomex®/Kevlar®/Polyoxazole with Enforce Technology
Material Weight: 6.6oz/yd²
Twill Weave

Kombat™ Flex



Content: 70% PBI®/Kevlar® blend spun yarn with 30% Kevlar® filament
Material Weight: 6.9oz/yd²
Twill Weave

PBI Max®



Content: 30% 600 Denier Dupont Kevlar® filament yarn
Material Weight: 7.0oz/yd²
Twill Weave

THERMAL LINERS

Q8



Face Cloth: Meta-aramid, FR modacrylic (spun)
Batting: Aramid, FR rayon, needle-punch, non-woven, reprocessed batt
Total Weight: 8.0oz/yd²

Defender™ M NP Brass



Face Cloth: Lenzing FR® Rayon, para-aramid, Nylon (spun yarn) Plain Weave
Batting: 1-Layer Aramid Needle Punch
Total Weight: 7oz/yd²
Color: Brass

Prism



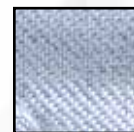
Weave: Channeling Raindrop
Batting: 4.0 oz. Pure Virgin DuPont™
Battings: Nomex®/Kevlar® needle punch batting
Color: Black and Tan

Defender™ M SL2



Face Cloth: Lenzing FR®/Para Aramid/Nylon blend spun yarn, plain weave
Batting: 2 layers of Nomex® spun lace (2 layers of 2.3 oz/yd²)
Total Weight: 7.8 oz/yd²

Glide Ice™ 2-Layer



Face Cloth: 3.6 oz/yd² 60% Nomex® filament 40% DuPont Nomex®/Lenzing FR spun yarn
Batting: 2 layers of Nomex® E89™ spunlace (2.3 oz/yd² and 1.5 oz/yd²)
Total Weight: 7.4 oz/yd²

Caldura® SL21



Face Cloth: Kevlar® filament yarn with Lenzing FR®/Kevlar®/Nylon blend spun yarn, twill weave
Batting: 2 layers of Nomex® non-woven spun lace (2.3 and 1.5 oz/yd²)
Total Weight: 7.7oz/yd²

Quantum 3D™ SL21



Face Cloth: Kevlar® filament yarn with Lenzing FR®/Kevlar®/Nylon spun yarn, check weave
Batting: Nomex®/Kevlar® non-woven spun lace (2.3 oz/yd² with waffle design and 1 layer 1.5 oz/yd²)
Total Weight: 7.7 oz/yd²

MOISTURE BARRIERS

Stedair® 3000



Substrate: Nomex® non-woven spun lace
Film: Bi-component ePTFE membrane
Total Weight: 5.2oz/yd²
Supplier Warranty: 3 Years

Stedair® 4000



Substrate: Nomex® woven pajama check
Film: Bi-component ePTFE membrane
Total Weight: 5.5oz/yd²
Supplier Warranty: 4 Years

Stedair® Gold



Substrate: PBI®/Nomex® blend non-woven spun lace
Film: Bi-component ePTFE membrane
Total Weight: 5.2oz/yd²
Supplier Warranty: 4 Years

MATERIALS MATRIX

OUTER SHELLS	STEDAIR MOISTURE BARRIERS	THERMAL LINERS
SYNERGY (Nomex)	3000	Q-8 NOMEX Quilt
SYNERGY (Nomex)	3000	Defender M Brass NP
SYNERGY (Nomex)	3000	Aralite NP
BRIGADE 750 (Nomex)	3000	Q-8 NOMEX Quilt
BRIGADE 750 (Nomex)	3000	Defender M Brass NP
BRIGADE 750 (Nomex)	3000	Caldura SL2i
ADVANCE	3000	Q-8 NOMEX Quilt
ADVANCE	3000	Defender M Brass NP
ADVANCE	3000	Aralite NP
ADVANCE	3000 / 4000	OMNI Synergy 2 Layer
ADVANCE	3000 / 4000	Defender M SL2 Camo
ADVANCE	3000 / 4000	Caldura SL2i
PIONEER	3000	Q-8 NOMEX Quilt
PIONEER	3000	Defender M Brass NP
PIONEER	3000 / 4000	OMNI Synergy 2 Layer
PIONEER	3000 / 4000	Defender M SL2 Camo
PIONEER	3000 / 4000 / Gold	Caldura SL2i
ARMOR AP	3000 / 4000	Prism 2-Layer
ARMOR AP	3000 / 4000	Glide Ice 2-Layer
AGILITY	3000 / 4000	OMNI Synergy 2 Layer
AGILITY	3000 / 4000	Defender M SL2 Camo
AGILITY	3000 / 4000 / Gold	Caldura SL2i
AGILITY	3000 / 4000 / Gold	Quantum 3D SL2i
AGILITY	Gold	Caldura NANO
KOMBAT FLEX	3000	Defender M Brass NP
KOMBAT FLEX	3000 / 4000	OMNI Synergy 2 Layer
KOMBAT FLEX	3000 / 4000	Defender M SL2 Camo
KOMBAT FLEX	3000 / 4000 / Gold	Caldura SL2i
KOMBAT FLEX	3000 / 4000 / Gold	Quantum 3D SL2i
KOMBAT FLEX	Gold	Caldura NANO
PBI MAX	Stedair 3000 / 4000	Prism 2-Layer
PBI MAX	Stedair 3000 / 4000	Glide ICE 2-Layer
1098 ALUM PBI	3000	Q-8 NOMEX Quilt
1098 ALUM PBI	3000	Aralite NP
1098 ALUM PBI	3000	Defender M Brass NP
1098 ALUM PBI	3000	Caldura SL2i
1088 ALUM PARA-ARAMID	3000	Q-8 NOMEX Quilt
1088 ALUM PARA-ARAMID	3000	Defender M Brass NP
1088 ALUM PARA-ARAMID	3000	Caldura SL2i